

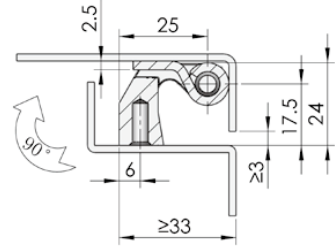
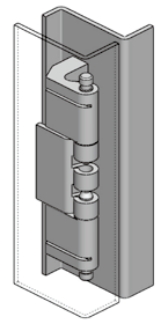
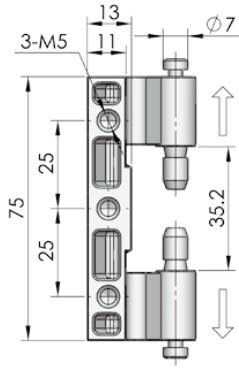
- Accessories
- Electronic lock
- Handle lock
- Cylinder lock
- Plane lock
- Rod control lock
- Panel lock
- Toggle and hook
- Handles
- Door stop
- Hinge
- Seal gasket

CL201-1

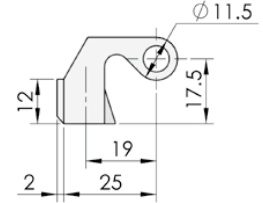


Main material and finish: ZDC hinge, steel pin, accessory

Performance parameter:
 Maximum static load
 Radial load: 800N
 Axial load: 1500N

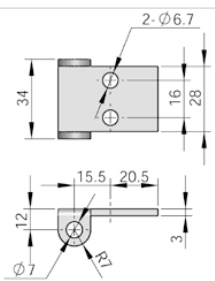


CL201-1

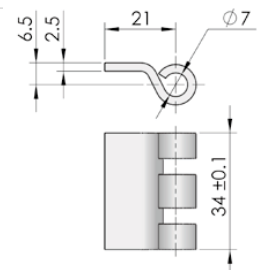


CL201-1A

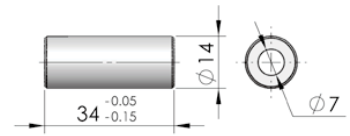
Remark: Size is 3.7, door's open angle is 90 degree.



"U" shape accessory
 ERP: 3452011001 (white zinc plating)



Claw shape accessory
 ERP: 3452011002 (white zinc plating)



Pipe shape accessory
 ERP: 3452011013 (white zinc plating)

Specification	CL201-1	CL201-1A	CL201-1B
Black powder coated	CL201Z2A002	CL201Z2A032	
Nanometer painted	CL201Z2B002	CL201Z2B017	
Blast sprayed	CL201Z4D002	CL201Z4D004	
SUS			CL201S4B001

Remark: Accessory is not included in above ERP number, but optional